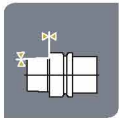
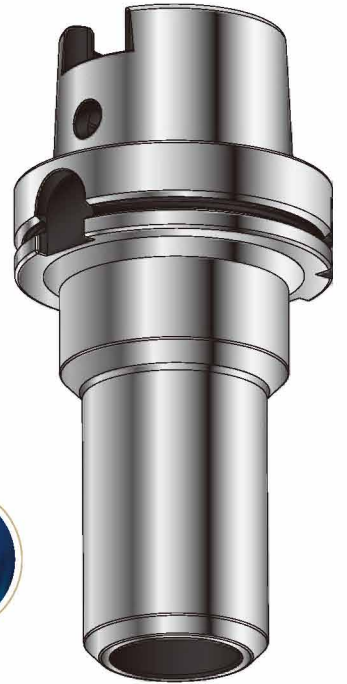
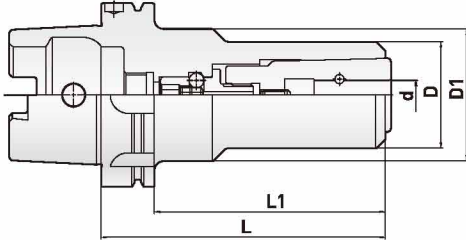
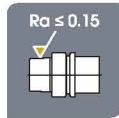


UC PIN COLLET CHUCK (UC25) High Vibration Damping Type

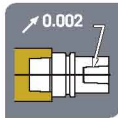
UC 安卡夾頭 (UC25) 高阻尼減震型



Dual face contact
兩面接觸



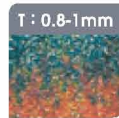
Surface roughness
表面粗度



Run out accuracy
內孔偏擺度



Surface hardness
表面硬度



Carbonized depth
滲碳深度



Order Code 訂購編號	Range(d) 夾持範圍	L	L1	D	D1	Min ⁻¹ G2.5 動態平衡	Spanner 扳手規格	Recommended Torsion 推薦鎖固扭力	Torque Wrench 扭力扳手
HSK100A-UC25-160	12~25	160	136	58	72	20,000	M10	25Nm	TW30+M10100

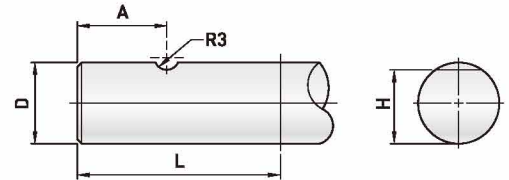
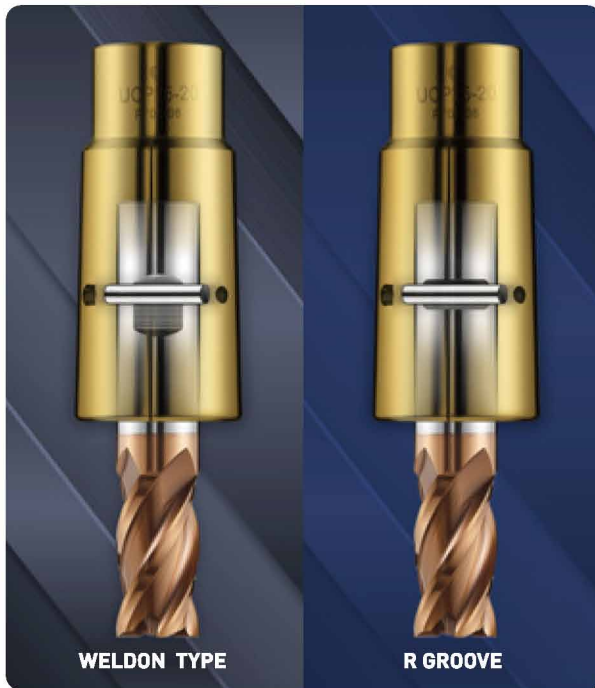
- The collet designed with PIN, 100% never tool pull out.
- Must be used R groove tool or standard specifications DIN 6535 HB for side lock tool.
- Must to choose the Pin collet, please check p.21

- 有PIN的夾頭設計，100%不掉刀。
- 必須使用R型溝槽刀具或標準規範DIN 6535 HB的側固刀具。
- 必須選用有PIN的筒夾，請參閱 p.21



UC PIN COLLET

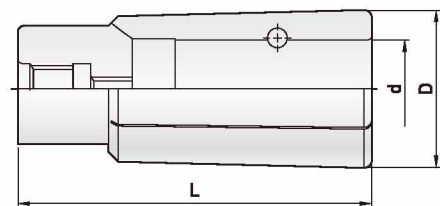
UC 安卡夾頭



Tool shark Dia.				
D mm	L mm	A mm	H mm	R groove R 型溝槽
6	36	17 ± 2	4.8 ⁰ _{-0.4}	R3
8	40	17 ± 2	6.6 ⁰ _{-0.4}	
10	40	19 ± 2	8.4 ⁰ _{-0.4}	
12	45	21 ± 2	10.4 ⁰ _{-0.4}	
16	48	21 ± 2	14.2 ⁰ _{-0.4}	
20	50	22 ± 2	18.2 ⁰ _{-0.4}	
25	56	29 ± 2	23 ⁰ _{-0.4}	

- Provide the Pin collet for UC20 and UC25. The tools can choose the standard side lock tool (DIN6535HB) or grinded the R groove at tools.
- UC PIN夾頭有UC20及UC25兩個系列可以選擇，刀具必須自行在柄部研磨R型溝槽或者選用標準側面的刀柄 (DIN6535HB)。

UC 20P / UC 25P



Order Code 訂購編號	(d) 夾持徑	L	D
UC20-6P	6	70	26
8P	8		
10P	10		
12P	12		
16P	16		
UC25-12P	12	90	40
16P	16		
20P	20		
25P	25		

FIXED TORQUE SPANNER

固定扭力扳手



Order Code 訂購編號	Torque 扭力值	⊙	L	Tool Item 適用規格
30294-5144	5Nm	4	70	UC6
5146	5Nm	4	115	UC10
5152	7Nm	5	55	
5154	7Nm	5	90	
5156	7Nm	5	140	
5158	7Nm	5	180	
5159	7Nm	5	240	

TORQUE WRENCH

扭力扳手



Order Code 訂購編號	Torque Nm 扭力值	Square Drive 接頭	Length (mm) 長度
TW30	5~30	3 / 8"	300



Order Code 訂購編號	⊙	Length (mm)	Tool Item 適用規格
M06100	6	100	UC16
M06160	6	160	UC16
M06200	6	200	UC16
M08100	8	100	UC20
M08160	8	160	UC20
M10100	10	100	UC25
M10160	10	160	UC25